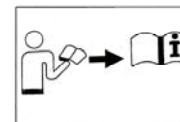


PARTS LISTS

| REF. NO. | Parts No. | Parts Name | Q' ty | REF. NO. | Parts No. | Parts Name | Q' ty |
|----------|----------------|--------------------------------------|-------|-------------|---------------|----------------------------|-------|
| 1 | 30103-01-1001 | Chassis | 1 | 39 | 80501030 | Bearing 6006-2RS | 1 |
| 2 | 30101-01-3028 | Label | 1 | 40 | 30103-01-1028 | A Washer | 2 |
| 3 | 30110-01-1004A | Motor 220-240V~80Hz | 1 | 41 | 30103-01-1029 | Bearing Box | 1 |
| 4 | 80305002 | Circclip $\phi 10$ | 2 | 42 | 30103-01-1030 | Plate With Counterweights | 1 |
| 5 | 80301013N | Level Washer $\phi 10$ | 4 | 43 | 80101018W | Screw M5X20 | 2 |
| 6 | 80304006 | A Washer $\phi 10$ | 2 | 44 | 80201015W | Screw M6X20 | 4 |
| 7 | 30103-01-1005 | Wheel | 2 | 45 | 80303004W | A Washer $\phi 6$ | 4 |
| 8 | 30103-01-1006 | Motor Shield | 1 | 46 | 80301005W | Level Washer $\phi 6$ | 4 |
| 9 | 30101-01-3003 | Trade Mark | 1 | 47 | 80303003W | A Washer $\phi 5$ | 4 |
| 10 | 30103-01-1007 | Screw Box | 1 | 48 | 80301003N | Level Washer $\phi 5$ | 2 |
| 11 | 80201017S | Screw M5X55 | 1 | 49 | 30103-01-1035 | Axle | 1 |
| 12 | 80301011N | Level Washer $\phi 8 \times \phi 16$ | 2 | 50 | 30110-01-3001 | Data Plate | 1 |
| 13 | 80401002W | Hexagon Lock Nut M8 | 1 | 51 | 30103-01-1037 | Start Capacity 75uF 250VAC | 1 |
| 14 | 80201011S | Screw M5X20 | 2 | 52 | 30103-01-1038 | Capacity Box | 1 |
| 15 | 30103-01-1010 | Hole Blanking Plug | 5 | 53 | 80301002W | Level Washer $\phi 4$ | 6 |
| 16 | 80201021J | Hexagon Screw M8X20 | 1 | 54 | 80102005B | Screw M4X8 | 2 |
| 17 | 10101-01-1011 | Cord Clip | 1 | 55 | 30103-01-1040 | Sponge Pad | 4 |
| 18 | 30103-01-1012 | P-Clip | 2 | 56 | 30103-01-1045 | Pedal Assy | 1 |
| 19 | 30103-01-1013 | Cord Hooks | 2 | 57 | 30103-01-1046 | Pedal holder | 1 |
| 20 | 80110003 | Pop Rivet-Handle $\phi 4 \times 8$ | 4 | 58 | 30103-01-1047 | Pedal | 1 |
| 21 | 30103-01-1015 | Handle Tube | 1 | 59 | 30103-01-1048 | Spring | 1 |
| 22 | 30101-01-3008 | Grounding Warning Label | 1 | 60 | 80102009S | Screw M4X40 | 1 |
| 23 | 80102014W | Screw M5X40 | 2 | 61 | 80401004S | Hexagon Lock Nut M4 | 1 |
| 24 | 30103-01-3004 | Trade Mark | 1 | 62 | 80106034S | Screw ST6.3X25 | 1 |
| 25 | 80102014W | Screw M4X16 | 4 | 63 | 80302013S | Level Washer $\phi 6$ | 1 |
| 26 | 30103-01-1019 | Front Handle Half | 1 | 64 | 801020041S | Screw M4X12 | 3 |
| 27 | 80106001W | Screw ST3.5X16F | 2 | 65 | 80106023B | Screw ST2.9X13 | 6 |
| 28 | 30101-01-1017 | Cord Clamp | 1 | 66 | 80301001B | Level Washer $\phi 3$ | 6 |
| 29 | 30103-01-1020 | Power Switch | 1 | 67 | 30110-01-1001 | Vacuum cover 12" | 1 |
| 30 | 80402003W | Hexagon Nut M4 | 4 | 68 | 30110-01-1002 | Vacuum connector | 1 |
| 31 | 30103-01-3005 | Warning Label | 1 | 69 | 80102049S | Screw M4X25 | 2 |
| 32 | 80402004N | Hexagon Nut M5 | 4 | ACCESSORIES | | | |
| 33 | 30103-01-1043 | Cord Protection | 1 | 70 | 90034F | 40# Sanding paper | 1 |
| 34 | 30103-01-1024 | Cord 350.75"X6m | 1 | 71 | 90034E | 60# Sanding paper | 1 |
| 35 | 80104015 | Screw M4X20 | 4 | 72 | 90034M | 80# Sanding paper | 1 |
| 36 | 80303002S | A Washer $\phi 4$ | 4 | 73 | 90034N | 120# Sanding paper | 1 |
| 37 | 30110-01-1005 | Tools Holder | 1 | 74 | 90034A | White pad | 1 |
| 38 | 30103-01-1026 | Bearing Core | 1 | 75 | 90073 | Hose connector DIA.40mm | 1 |

SERVICE MANUAL

ORBITAL FLOOR SANDER & POLISHER



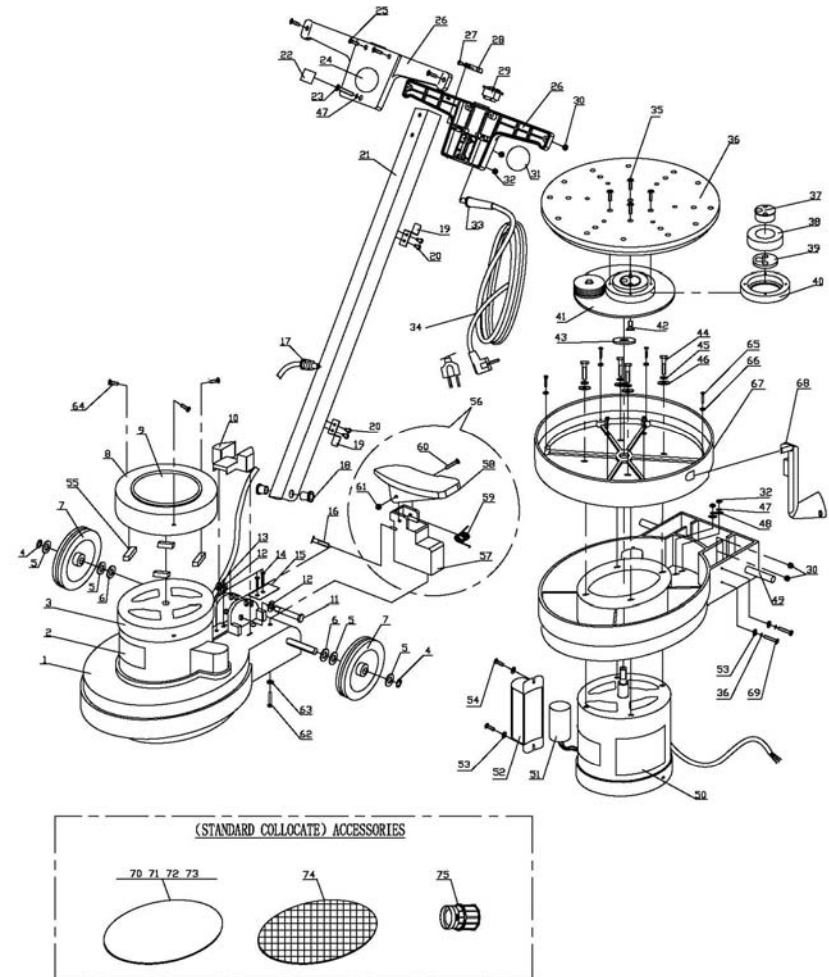
*This manual be read
before using the machine*

GENERAL SAFELY INSTRUCTION

To reduce the risk of fire, electric shock or injury, please observe the following safely instruction!

1. The voltage must concur with that given on the machines data plate.
2. The appliance must be grounded: if the socket is improper, must change the socket or, increase the interim adapter, the socket and adapter must accord with the local legal rule.
3. Use indoors only.
4. There can't be incidentals in the working area, and there are well illuminated and good ventilation.
5. Don't use in areas where flammable or explosive substance. Such as gasoline.
6. Don't leave appliance when plugged in; Unplug from outlet when not in use, install or remove the brush/pad and before servicing.
7. Check the cord regularly, don't use with damaged cord or plug; If appliance is not working as it should has been dropped, damaged, left outdoors, or dropped into water, return it to a service center.
8. Don't pull or carry by cord, use cord as a handle, run appliance over cord, close a door on cord, keep cord away from heated surfaces, oil, sharp edges and corners.
9. Don't unplug by pulling on cord; Turn off all controls before unplugging.
10. Keep hair, loose clothing, fingers, and all parts of body away from openings and moving parts.
11. To reduce the risk of fire, use only commercially available floor cleaners and waxes.
12. When not in use, should store it carefully. Don't allow to be used as toy by children, so as not to cause the danger.

ORBITAL FLOOR SANDER & POLISHER EXPLODED DRAWING



MAINTENANCE

Warning: Make sure the Floor Sander is disconnected from its electrical outlet prior to performing any inspection, maintenance, or cleaning procedures.

1. Be careful when using the machine, dropping, unreasonable bumping or rough handling may result in damage to the balance and counterweight system; Wrap your cord loosely around the two hooks on the handle.
2. Keep the machine clean, remove brushes after use, and clean it with wet wiper.
3. When Sanding Paper is wear out, replace them.
4. Periodic lubrication using light oil is recommended at the motor bearings.
5. Always use the same brand and type of spare parts.
6. The common trouble and solution (Disconnect power cord before servicing)

| Trouble Diagnosis | | |
|-------------------------------|--|--|
| Problem | Possible Cause | Action |
| Machine will not run | <ol style="list-style-type: none"> 1. Not firmly plugged into plug 2. No voltage in plug 3. Malfunction for start capacitor. 4. Power Cord damaged | <ol style="list-style-type: none"> 1. Plug unit firmly 2. Check fuse or breaker 3. Replace capacitor 4. Replace the Power Cord |
| Machine Bounces | <ol style="list-style-type: none"> 1. Tools Holder being warped 2. Plate with counterweight damaged | <ol style="list-style-type: none"> 1. Replace the Tools Holder 2. Replace the Plate with counterweight |
| When hearing irregular noises | <ol style="list-style-type: none"> 1. The screw of chassis is loose | <ol style="list-style-type: none"> 1. Make it tightly |

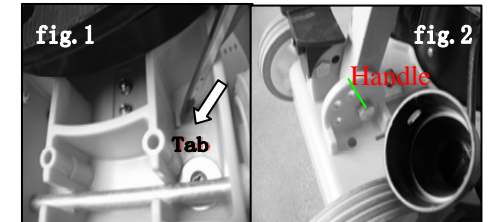
13. To avoid electric shock, please store appliance in a dry place, don't drench with rain, only clean the appliance with wet wiper.
14. The appliance may only be serviced and maintenance by customer services shops with legal authorization who are approved by manufacturer.

PREPARATION FOR USE

1. Assembly for Handle:

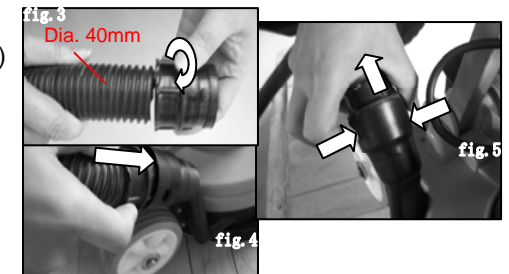
Turn the Chassis (1) upside-down and gently press the tab on the Screw Box (10) from underneath using a screwdriver. Remove the Screw Box. (See fig.1);

Align the mounting holes in the lower portion of the Handle Tube (21) with the front two mounting holes in the bracket at the rear of the Floor Machine's Chassis. This is the location that the Handle Screw (11) is shown on Fig.2. Then secure the Handle Tube to the Chassis, using one Handle Screw, two Flat Washer (12), and one Hex Lock Nut (13). Replace the Screw Box.



2. Assembly and Remove for Vacuum Hose.

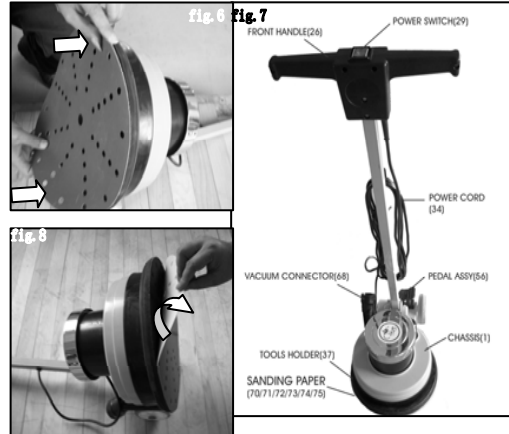
Assembly: Connect the Vacuum Hose (Dia. 40mm) to the Hose Connector (76) as shown on Fig. 3. Then put the Hose to the Vacuum Connector (68) as shown on Fig. 4.



Remove: Press the Tab on Vacuum Hose on pull it out as shown on Fig.5.

3. Assembly and Replace for Sanding Paper

Assembly: Put the Handle Tube back to vertical position, then lay the machine on its back with the handle lying on the floor. Align the Vacuum hose of Sanding Paper (70-75) and Tools Holder (37), then put the Sanding Paper onto the Tools Holder (37), as shown on Fig.6.

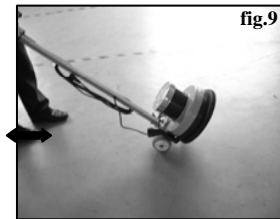


Replace: Follow the indication as below to lay the machine on floor, remove the Sanding Paper by hand, as shown on Fig.8, and then replace

by a new one.

4. The motion of machine

Put the Handle back to vertical position to lock it by the Foot Pedal (58). Hold tight handle and makes the two wheels (7) drop to the ground, than can push or pull the machine to move.



CAUTION:

The voltage must concur with that given on the specification plate.

OPERATING INSTRUCTIONS

1. Install Sanding Paper before plugging in.
2. Make sure that the switch (29) is in the OFF (0) position before you plug the power cord into the socket to secure operation.
3. Must keeping the handle on the highest point, prevent the handle from dropping; cause the danger that people or anything.
4. To protect your health, wear protective goggles and mask.
5. Always wear shoes when using the Sanding Machine.
6. If a extension cord is necessary, please comply with the safety regulations that apply in your country.

7. When not in use, remove Sanding Paper.

PURPOSE AND SPECIFICATIONS

SL-330A Floor Sander design for residential and commercial use and the main purposes are grinding and polishing your wooden floor.

Specifications

| | |
|-------------|----------------------------------|
| Power Input | 220-240V~50Hz |
| Motor | Single Speed /275W/150rpm |
| Power Cord | H05VV-F3G0.75mm ² x6m |
| Accessories | Hose Connector |
| Weight | 14.8kg |

OPERATING

Connect the Vacuum Hose to Floor Sander and choose the suitable Sanding Paper for work. Release the Handle Tube by pressing the Foot Pedal and press the switch in ON (I) position to starting the Sander. When operating, just grasp the Handle and glide the machine across the wooden floor. To shut down the machine, just press the switch in OFF (0) position, after the motor is complete stop, put the Handle Tube back to vertical position to lock it by the Foot Pedal.